

PLAN THIS!



American Planning Association
New Jersey Chapter

Making Great Communities Happen

A Publication of the New Jersey Chapter of the American Planning Association

Volume 6, Issue 1

January — February 2008

Record Attendance at 2007 Annual Conference

By Rebecca M. Hersh, AICP/PP

Planners seeking to broaden their horizons with informative panels on a wide range of planning and policy-related topics, a dazzling keynote speaker, some schmooze time with colleagues, and certification maintenance credits came out in record numbers at NJ APA's annual conference this past November at the Hyatt Regency hotel in downtown New Brunswick. The conference was co-sponsored with the Edward J. Bloustein School of Planning and Public Policy at Rutgers, the State University of New Jersey.

With sessions as varied as "South Jersey: The New Growth Frontier," "Freehand Sketching for Planners," "Exploiting the Potential of – and Overcoming Resistance to – Transit-Oriented Development," "Redevelopment Area Designations and Recent New Jersey Court Clarifications: The Need for Planners in the Process," "Overcoming Anti-Family Zoning: Creative Solutions from Other States," and "Form-Based Zoning and Land Use Regulatory Reform: Coming to New Jersey?" attendees were able to satisfy a wide variety number of intellectual and professional needs. There were 20 sessions in all, more than ever.

Over 460 planners attended the conference, breaking last year's record of 350. No doubt some of this attendance increase was due to the fact that the sessions allowed attendees

(Continued on page 6)



The crowd at the Annual Conference luncheon

Inside this issue ...

President's Corner	... Pages 2-3
AICP Certification Maintenance	... Page 4-5
Legislative Corner	... Page 7
Revamping NJ's Licensing Boards	... Page 8
Online Continuing Education for Planners	... Page 12
Upcoming Events & Announcements	... Page 12
Consultant Directory	... Pages 13-15
The Last Word	... Pages 16

The Changing Face of Asbury Park

By Maura McManimon Fennessy, AICP/PP

What do you get when you cross a balmy, late-September day, a cast of redevelopment experts, and NJ APA's first foray into Certification Maintenance credits? You get the very successful Asbury Park Walking Tour and Redevelopment Discussion, held on Friday, September 28, 2007. The weather was a little touch-and-go that day, but it cooperated in time to give about 55 NJAPA members the opportunity to see a sidewalk- and boardwalk-view of the redevelopment underway in Asbury Park.

Thanks to our tour guides – Don Sammet, Asbury Park's dedi

(Continued on page 4)

PLAN THIS!



A Publication of the New Jersey Chapter of the American Planning Association

PLAN THIS is a bi-monthly publication of the New Jersey Chapter of the American Planning Association. This publication is available only to members of the New Jersey Chapter.

The NJAPA Bulletin committee welcomes submission of original articles, editorial letters, photographs, news items, and classified advertisements. The committee reserves the right to only publish submissions that are deemed appropriate for this publication. The views published in the bulletin are not necessarily those of the NJAPA.

Rebecca M. Hersh, AICP/PP
Bulletin Editor
rebeccamhersh@aol.com

Michael L. Powell
mpowell@njcdc.org

Jeffrey Perlman
jeffperlman@gmail.com

To find out more information on joining the New Jersey Chapter or if you would like to place an advertisement in future bulletins please contact:

Michael E. Levine, AICP
NJAPA Chapter Administrator
P. O. Box 200402
One Riverfront Plaza
Newark, NJ 07102-9715
Phone (973) 286-4708
Fax: (973) 504-7097
mlevine@njapa.org

Please submit all address changes to:
American Planning Association
122 S. Michigan Avenue
Chicago, IL 60603-6107
(312) 431-9100
Or online at: www.planning.org

PRESIDENT'S CORNER

By Courtenay Mercer, NJAPA Chapter President

In this, my first *President's Corner* article, I wanted to express my gratitude to the membership for placing me in this leadership position. I look forward to working with the Executive Committee and the membership of the NJAPA to advance the cause of our profession and the organization. As we say goodbye to 2007, I thought I would reflect on the past year's accomplishments, and look forward to the initiatives we have planned for 2008.

It was certainly a year of conferences. The APA Conference in Philadelphia was very successful, including a number of mobile workshops highlighting New Jersey. While I do not have an official tally, the conference seemed to be teaming with NJ planners sharing experiences and ideas with counterparts from around the nation. The conference also afforded NJ the opportunity to show off Camden and our party-planning skills at the aquarium. Despite the weather, attendance exceeded our expectations and the party proved to be a good time for all.

Speaking of membership participation, this year's NJAPA conference had a record-breaking 460 attendees. That is up from 350 last year! I have received tremendously positive feedback about the program, particularly our keynote speaker, Newark Director of Community Development, Toni Griffin. The NJAPA conference is a wonderful tradition that the Executive Committee is committed to making bigger and better each year.

The NJAPA also amended its by-laws this year to include two new committees. Given the great need in this state to provide diverse and affordable housing, a Housing Committee was established to advocate law and policy that support this effort. The NJAPA also established a Sustainable Design Committee that already has an active group of volunteers. They are participating in the State-wide Sustainable Communities Working Group, which includes the NJSSI, MLUC, NJLM Mayor's Committee for a Green Future and DEP. The Sustainable Design Committee is also taking the lead on a pro-bono planning assistance program initiative with the assistance of a grant we received from APA earlier this year.

The coming year will be largely dedicated to professional development. The annual conference and a very successful tour and redevelopment seminar in Asbury Park were just the first of many programs the NJAPA will offer to assist our members in meeting their AICP Certification

Maintenance (CM) requirements. The Professional Development Committee is working on NJAPA sponsored events, as well as, looking for opportunities to partner with non-profits, government agencies and other professional organizations that offer educational seminars. Our goal is to provide at least the minimum number of credit hours per year at little or no cost through NJAPA events, and to provide supplemental opportunities through partnerships. Stay tuned for more information on this important effort in future newsletters and e-mail bulletins.

In addition to our APA duties, the NJAPA serves NJ Professional Planners. Over the years, we have received many complaints about the responsiveness of the Board of Professional Planners staff, as well as the overall advocacy of the Board for the advancement of the planning profession. The Attorney General's Office recently announced its intention to

overhaul many of the State's licensing boards. The NJAPA is taking advantage of this opportunity to enhance our interaction with the Board of Professional Planners.

Finally, the NJAPA plans to up-date our two educational publications—*The Redevelopment Handbook* and *The Complete Guide to Planning in New Jersey*. The Redevelopment Committee has been tracking recent court decisions, as well as legislative activities related to redevelopment. To better reflect the reality of redevelopment planning in NJ, the Committee will be leading the initiative to provide an up-date to *The Redevelopment Handbook*. The NJAPA is also looking to up-date *The Complete Guide to Planning in New Jersey*, as many legislative and regulatory changes have occurred since the last edition. We are looking for volunteers to assist in this effort—if you are interested, please do let me know.

As you can see, the NJAPA has been very busy, and will continue to be so in the coming year. As I come into this Presidency after a year as President-elect, I am very impressed with the dedication of the Executive Committee and would like to convey my deepest gratitude for their effort and support. I would also like to thank Carlos Rodrigues for his leadership of the organization over the past three years. I plan to keep Carlos' momentum going, and look forward to working with the Executive Committee and the membership over the next three years to enhance the prominence of this professional organization as a source of information and activism in the state.

The President's Corner reflects the President's opinion and not necessarily that of the NJAPA Executive Committee or NJAPA membership. The President can be contacted at pres@njapa.org.

Sign up now for APA's 2008 National Planning Conference in Las Vegas

Come to the 100th annual planning conference in Las Vegas, Nevada from Sunday April 27 to Thursday May 1, 2008. Enjoy 200-plus conference sessions, mobile workshops, training seminars, and networking opportunities in a city that is tackling a wide range of planning issues and problems as it continues to grow. Early registration deadline is February 28, 2008. For more information, and to register for the conference, visit www.planning.org.



...Asbury Park Walking Tour

(Continued from page 1)

cated Director of Planning, and the ever-animating Fred Heyer, a principle at Heyer Gruel – the participants were treated to local perspectives of Cookman Avenue, with now-thriving restaurants and artsy home decorating shops, and the plans in progress for the oceanfront area.

Following the walking tour, tour attendees gathered at City Hall to hear about recent New Jersey court decisions regarding redevelopment area designations. The distinguished panel included Bob Cotter, the Planning Director for Jersey City; Tom Hastie from the law firm McManimon and Scotland; and the walking tour guides, Don Sammet and Fred Heyer. They gave an update on the implications of the array of redevelopment decisions, including Paulsboro and Newark. They also talked about the effect of these decisions on the planning profession, namely the added scrutiny and need for substantial evidence when using the “d” and “e” criteria in designating areas in need of redevelopment.

They made it clear that this is an important time for the planning profession, and planners need to be informed and prepared to respond to this increased scrutiny with the type of thorough research and analysis that we can bring to the table.

Tour Qualifies for Certification Maintenance Credits

NJAPA is pleased to announce to all those that attended that the Asbury Park Redevelopment Course has been approved for Certification Maintenance (CM) credit. The walking tour was approved for 1.75 credits and the panel discussion was approved for 1.0 credits, for a total of 2.75 CM credits applicable to anyone who participated in the entire afternoon’s activities. Log on to your account at www.planning.org to register for credit.

It is NJAPA’s goal to offer free opportunities similar to the Asbury Park walking tour to enable New Jersey’s professional planners to earn credits throughout the year. As always, your input is important to us. If you have any suggestions for future education topics and CM opportunities to NJAPA’s Professional Development Officer Charles Latini at: charleslatini@yahoo.com.

AICP Certification Maintenance Comes to New Jersey

By Charles Latini, AICP/PP
NJ APA Professional Development Officer

In the most regulated state in the nation, New Jersey planners have now been asked to maintain their American Institute of Certified Planners (AICP) certificate through new APA National regulations. The program, adopted in April and unveiled for use recently, is called Certification Maintenance or CM for short.

There have been numerous complaints by members since CM has been adopted. Many of them surrounding the administrative complexity of the program but some more focused on implications of a money making scheme by APA. While too early to judge CM, the intent of the program is honest and was put in place to ensure we as planners take time to ensure we remain relevant and up-to-date.

The new on-line system can be accessed by logging onto www.planning.org/cm. Through the on-line system, AICP planners will indicate the approved courses and training sessions they attended, thus making their way toward meeting the 32 credit for every two (2) year period AICP requirement. The only mandatory

classes within the time frame are 1.5 credits pertaining to ethics and 1.5 pertaining to law. Every one (1) credit is equal to one (1) hour training.

Starting January 2008 the CM program will be in full swing and planners will be asked to ensure they meet the biannual criteria. The good news (initially, anyway) is that Credits gained in 2007 are retroactive from since April, and will count for the January 2008- December 2009 cycle. You may in-fact start logging them in today.

PLEASE NOTE: All courses are submitted to APA National by the *provider* for approval. NJAPA does not approve or submit courses for approval. However, NJAPA does co-sponsor quite a number of events throughout the year. You can expect that NJAPA co-sponsored courses will be seeking CM credit.

To date in NJAPA has brought two (2) credit worthy opportunities to its members with several more on the way. The Annual Chapter Conference and the Asbury Park Redevelopment Seminar are

sure to get out members on their way toward meeting the CM requirements. Those of you who attended the APA National Conference in Philadelphia will gain those credits as well.

NJAPA will continue to work to provide credit worthy opportunities to its members, but as stated previously, credits will depend on the provider. So with that said, NJAPA will need your help getting the word out and making sure potential credit providers like the League of Municipalities, TransAction, AIA, and the Congress of New Urbanism register with APA for their training sessions so that we have plenty of opportunities.

As with all the services NJAPA provides, we encourage your input and suggestions.

Certification Maintenance Info

All AICP certified planners are required to complete 32 credit hours of training per two-year period. All credits must be received from APA-registered providers.

Providers register at www.planning.org/cm/forproviders.htm. CM events must be registered no more than 90 days after the event took place.

Providers must offer the following information in order to gain credit: course title; course dates; credits requested (hours of instruction); location; short description; instructors; and instructor biographies. Additionally, the activity must meet the following CM criteria:

- is designed to meet a specific planning-related training objective.
- is led by one or more experts on the subject. An expert is a professional who has made a contribution to the profession through practice, teaching, research or publications; completed works that proclaim individuality and mastery of the principles of planning taught; and whose work demonstrates outstanding quality and professionalism.
- is designed to teach subject matter appropriate in depth and scope and at a level beyond a planner with at least two years of professional planning experience.
- is not promotional in nature.
- addresses demonstrated educational needs.
- communicates a clearly identified educational purpose or objective.
- uses learning methodologies and formats that are appropriate to the activity's educational purpose or objectives.
- uses evaluation mechanisms to assess an activity's quality and relevance to its purpose or objectives.
- includes a mechanism of recording attendance of each AICP member.

For more information, visit www.njapa.org or www.planning.org/cm.



Certification Maintenance
The American Institute
of Certified Planners'
commitment to
continuing education.

Call for NJ APA Volunteers

The NJAPA is seeking volunteers to *actively* participate in the following initiatives:

In an effort to be more representative of our membership, the NJAPA Executive Committee has approved the creation of another Area Representative position by dividing the Southern Region. While this will require a formal by-law amendment during the next election, the Executive Committee seeks a volunteer to serve as an **ad hoc Area Representative** for an anticipated Southern Region that includes **Atlantic, Cape May, Cumberland, and Salem Counties**. (Tara Paxton will remain the Area Representative for the remainder of the Southern Area—Burlington, Camden, Gloucester and Ocean Counties.) The individual must either live or work in the region to be eligible. The position requires the organization of at least one Certification Maintenance eligible event a year, as well as participation in monthly Executive Committee meetings and other NJAPA events.

The NJAPA is also looking to form an ad hoc Committee to update *The Complete Guide to Planning in New Jersey*. There have been a number of legislative and regulatory changes since the guide's last publication. The Committee will serve to review, revise and/or seek contributors to up-date this publication.

The **Legislative Committee** seeks members to review and make recommendations regarding legislation and regulations relevant to the planning community. The Committee also informs the membership of significant legislation, and coordinates its activities with the other committees.

If you would like to participate in any of these initiatives, please contact the Chapter Administrator, Michael Levine, at mlevine@njapa.org or (973) 286-4708.

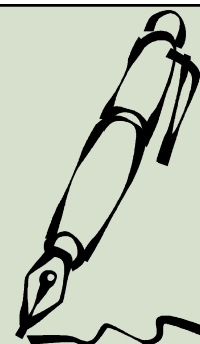
Write for the NJAPA Newsletter!

The NJAPA Bulletin welcomes all planning-related article submissions, editorials, event announcements, and photographs.

Please e-mail submissions and questions to NJAPA Bulletin Editor Rebecca Hersh at: rebeccamhersh@aol.com

Upcoming Deadlines:

- Friday, **February 29** for the March/April 2008 issue
- Friday, **April 25** for the May/June 2008 issue
- Friday, **June 27** for the July/August 2008 issue
- Friday, **August 29** for the September/October 2008 issue
- Friday, **October 31** for the November/December 2008 issue



...2007 Conference

(Continued from page 1)

to receive Certification Maintenance credits. Under the guidelines of the new AICP requirements, all AICP certified planners are required to complete 32 credit hours of training per two-year period. (For information on the Certification Maintenance program, see pages 4-5.)

Keynote Address

Highlighting the day-long conference was



Keynote speaker Toni Griffin, Director of Planning for the City of Newark

the keynote speaker, Toni Griffin, Director of Community Development for the City of Newark. Her address, titled "Planning Newark: Rebuilding the Function of City Planning in Newark," outlined Ms.

Griffin and Mayor Cory Booker's vision for Newark and strategies for using urban planning and urban design to guide Newark's urban transformation.

2006 Awards for Planning

Another highlight of the day was the awards ceremony, where the 2007 Planning Awards were presented. These awards honor plans, planning and design initiatives, reports, built projects, individuals and organizations that are in the forefront of planning in NJ. They also recognize professional planners, citizens, and elected and appointed officials for their contributions to the planning field.

The 2007 award winners are:

Doo Wop Motels – A Conservation Strategy

Outstanding Preservation Plan
Stantec Consulting Services, Inc.

Woolwich TDR Plan

Outstanding Comprehensive Plan
Melvin | Kernan Development Strategies

Somerville Transit-Oriented Redevelopment Plans

Outstanding Smart Growth Plan
Borough of Somerville; Somerset County Planning Board; New Jersey Transit; New Jersey Office of Smart Growth; Regional Plan Association; Phillips Preiss Shapiro Associates

Homes For New Jersey Campaign

Planning Leadership Award

Roland Whitley, Jr

Budd Chavooshian Award for an Outstanding Professional Planner
Community Technical Assistance, Inc

William S. Beetle

Distinguished Service Award
DMJM Harris

Joseph Maraziti, Jr Esq.

President's Award for Distinguished Leadership in Planning
Maraziti Falcon and Healey

Alan Mallach, FAICP

President's Award for Distinguished Leadership in Planning
National Housing Institute

Robert Goldsmith, Esq.

President's Award for Distinguished Leadership in Planning
Greenbaum Rowe

Gary Toth

President's Award for Distinguished Leadership in Transportation Planning
The Bio Engineering Group

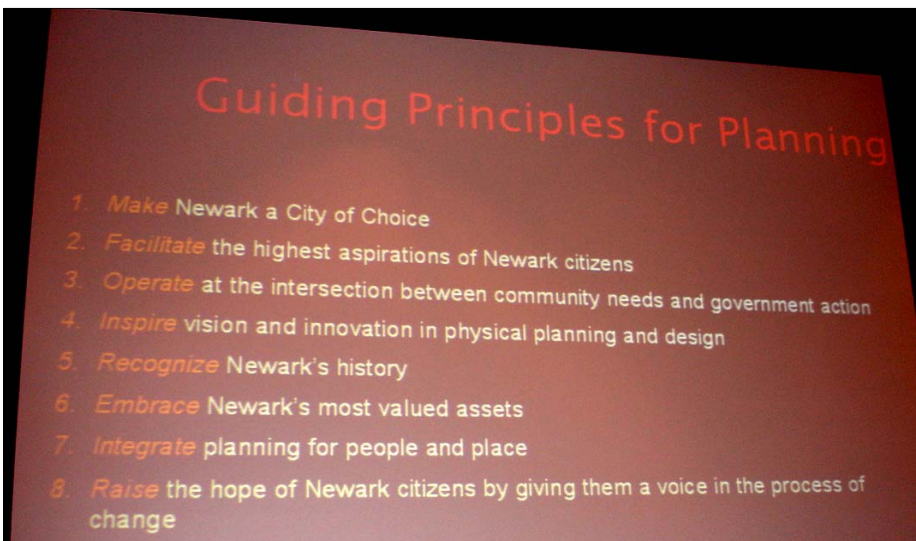
Awards Jury

- Awards Committee Chair: Gail O'Reilly, TownWorks
- Jon Carnegie, AICP/PP, Voorhees Transportation Center
- Angela Clerico, AICP/PP, Banisch Associates
- Joanne Harkins, AICP/PP, New Jersey Builders Association
- Peter Medina, PE/PP, Bernards Township
- Carlos Rodriguez AICP/PP, Regional Plan Association
- Joel Schwartz, Landmark Properties, LLC

Thanks to Our Sponsors

The NJ APA and the Bloustein School would like to thank our sponsors for their generous support of the 2007 Annual Planning Conference:

- Clarke Caton Hintz
- Wilentz, Goldman & Spitzer P.A.
- Heyer Gruel Associates
- CMX
- Airvac
- Maraziti, Falcon & Healy, LLP
- Stearns Associates, LLC



Guiding principles for planning in Newark

Legislative Corner: National Affordable Housing Trust Fund Bill Passes in the U.S. House of Representatives

By Vito A. Gallo, PP
Housing Committee Chair

A bill to establish The National Affordable Housing Trust Fund – a dedicated funding source to build, rehabilitate and preserve 1.5 million housing units over 10 years for the nation's lowest income households – has passed the U.S. House of Representatives on a vote of 264 to 148. The Bill, H.R. 2895, had strong bipartisan support – with twelve of New Jersey's thirteen Representatives voting to establish the housing trust fund.

The Trust Fund would NOT rely upon the uncertainties of the annual congressional budgeting process, but would generate new additional dollars for affordable housing by assessing the so-called Government Sponsored Enterprises, Fannie Mae and Freddie Mac, as well as the FHA. (These federally-chartered housing finance vehicles and the FHA insurance program are likely to regain their prior dominant roles in housing finance, as the private credit markets retrench – particularly from subprime and other mortgage finance business.)

Eligible activities: The Trust Fund would be used for new housing production, preservation of existing federally assisted housing and the rehabilitation of existing private market affordable housing – particularly rental housing.

Income targeting: At least 75% of the trust funds would be utilized for housing that is affordable to extremely low-income households, that is, for households with incomes under 30% of the Area Median Incomes.

Distribution: Trust Fund assistance would be distributed on a formula basis, with 60% of the funds to be allocated directly to local governments and 40% allocated to the states.

APA support: The Bill mandates smart growth urban planning and green building criteria for the allocation of affordable housing funds.

New Jersey has a good deal at stake in the effort to establish The National Af-

fordable Housing Trust Fund. New Jersey's municipalities have established 252 local affordable housing trust funds – more than any other state in the nation. A national trust fund would supplement local funds at a time when the State's Balanced Housing Fund is anticipated to decline due to declining realty transfer tax collections.

It is widely acknowledged in the planning community that New Jersey is among the most "housing cost-burdened" states in the nation. Presently, almost one-half of all New Jersey renters – almost 500,000 renter households – are paying more than the 30% of their household income for rent and utilities. (Source: The 2006 American Community Survey)

(The APA-supported campaign to enact The National Housing Trust Fund Act of 2007 will now focus its efforts upon the passage of a soon-to-be introduced companion Bill in the U.S. Senate.)

NJ APA's Sustainable Design Committee

By Medea Villere
The Rutgers Center for Green Building

The NJ APA Sustainable Design Committee consists of a diverse group of roughly 45 planning professionals who represent both public and private entities, such as academia, state government, and planning firms. There is also a diversity of specialization within the committee including: environmental, housing, design, economic development, transportation, and redevelopment. See the Committee's mission statement at http://www.njapa.org/sustainable_design.html

As their first task, the SDC focused on legislative advocacy, including possible NJ APA actions pertaining to legislation. The SDC divided the sustainably-related proposed legislation into categories, and

created sub-committees to review and give feedback on the legislation. An informal *Legislative Summary* compiling all this feedback can be viewed at www.njapa.org.

At the Committee's July 13th meeting, Doug Greenfield facilitated a brainstorming session on the creation of a SDC policy paper. This took the form of using the APA's Policy Guide for Planning for Sustainability (www.planning.org/policyguides/sustainability.htm) as an agreed-upon starting point, and customizing the SDC's response to it by categorizing potential opportunities and potential (or at least perceived) constraints to Planning for Sustainability in New Jersey.

Doug is now working with a SDC Policy Paper Working Group on furthering this project.

Also at the July meeting, David Kutner presented a proposal for a Community Design Initiative that would take the form of workshops/ design charrettes. The SDC believes that educating by doing has a big impact on bringing municipalities to that "aha" moment and seeing how Sustainable Planning and Design can apply specifically to their community.

Contact Medea Villere at medea_villere@yahoo.com if you are interested in joining the SDC.

New Jersey to Revamp its Licensing Boards?

By Charles Latini, AICP/PP
NJ APA Professional Development Officer

The State's Attorney General's Office recently released a statement that they will begin the task of improving all the State's licensing boards. Speaking for the planning community through our experiences over the past several years I say: better late than never.

The Chapter's Executive Board has expressed its support of the AG's effort to revamp the State's 42 professional licensing boards, and hopes they start with the Board of Professional Planners.

Because NJAPA provides support for all planners in the State, we indirectly serve the State Board by providing technical assistance on a variety of levels including: application requirements and procedural assistance, web-based information dissemination, responding to numerous Board related phone calls and email inquiries, and professional planning training courses. All professionals serving NJAPA are volunteers.

Through our services, NJAPA has developed a deep understanding of the needs of this particular licensing board. Following are the thoughts NJAPA has relayed to the State Board and the AG's Office (the full text of the letter NJAPA sent is on page 9):

Communication with the Public: Examinees routinely state to NJAPA that they cannot get answers to questions from the Board. Staffing levels are inadequate to service the basic needs of planners and many calls go unanswered for long periods of time.

Up to Date Website: The Board's website is poor and often out of date. If staffing at the State Board continues to remain at current levels it seems that an up-to-date website will reduce staff burden by improving communication and reducing the amount of phone calls the Board (and NJAPA) has to answer.

APA and State Board Communication: While NJAPA officers are at times able to gain access to Board staff we

need a more direct line of communication. While recognizing the sensitivity of examination information, if NJAPA is going to continue to disseminate information, thus supporting the Board, then perhaps a NJAPA seat on the State Board is in order.

The NJPP Licensing Exam: NJAPA fully supports an up-to-date exam, but the examination does not have to be an absolute mystery. ALL major examinations (AICP, SAT LSAT, etc) allow for topical review, basic expectations, and the like, that an examinee is expected to know. It routinely remains unknown as to whether the exam is up-to-date this year or next and what version of the MLUL or COAH regulations they are working from. Since APA provides the only form of exam preparation in the State it would be nice to know some basic information without; a) Having to beg for information and b) Being made to feel unethical by asking for it.

NJPP & AICP Exam requirements: Planning is a specialty. As such, the title of PP deserves all the same considerations as engineers or architects. Whether one is trained as a planner or other design professional, planners view development from a different perspective from all the other professions. Allowing engineers, architects, and land surveyors an easier passage to the PP title is an absolute insult to educated and experienced planners. None of these other designations are reciprocal, nor should they be.

At an absolute minimum, the State Board should require all applicants to go through the same process and requirements regardless of "other" training. Being able to bypass the AICP Planning exam and still become a planner is like allowing a medical student to become a doctor without passing basic anatomy. The AICP portion of the State's examination process should be required of all examinees. The importance of the subject matter on the AICP examination is paramount to a basic understanding of

planning; especially given the complexity of issues that are in desperate need of addressing in New Jersey. Engineers, architects, land surveyors, and landscape architects should not be given a free pass from planning merely because they know something related to it.

Enforcement: The State should maintain the integrity of its rules and regulations to ensure the proper use of a "Planning" title. While the practice of planning by unlicensed planners at the private sector level is not an issue, routinely it can be found that state and local government employees hold "planning" titles. While some of these practitioners are working "under" a licensed NJPP, many are not. The practice of planning is not for political appointees, it is for trained individuals that are licensed to serve New Jersey's communities.

Ethics: NJAPA believes the State Board should adopt the AICP Code of Ethics as a standard for all NJPPs.

Continuing Education: APA National has just passed their Certification Maintenance Program. This program is meant to keep AICP certified planners up to date with regard to planning issues, laws and trends. While I am not suggesting an overly tedious initiative, the State Board should review some measure of attainment in keeping with this approach.

NJAPA serves all planners and prospective planners in the State and assists this community in navigating the application and examination process. Because of all the issues explained above, NJAPA routinely acts as an arm of the State Board and staff. This is a challenge. While NJAPA wishes to continue to support the Board it cannot continue to do so effectively under the current conditions. NJAPA Executive Board is strictly volunteer and does not maintain any paid staff to continue to perform what is really the State's administrative function.

As with all matters, NJAPA welcomes your input and feedback. Feel free to

November 12, 2007

The Honorable Anne Milgram
Attorney General, State of New Jersey
P.O. Box 080
Trenton, NJ 08625-0080
Re: New Jersey State Board of Professional Planners

Dear Ms. Milgram:

I write to you on behalf of the New Jersey Chapter of the American Planning Association (NJAPA). We would like to express our support for your effort to revamp the state's professional licensing boards. Licensing, and the efficient delivery thereof, is of critical importance to the State, the individual seeking a license, as well as our citizens that pay for services rendered. In support of this effort, the NJAPA would like to share our experiences with one of your licensing boards—the State Board of Professional Planners.

The NJAPA (1,000 members) is a professional planning organization that is affiliated with the national American Planning Association (APA – 40,000 members) (www.njapa.org and www.planning.org, respectively). The NJAPA provides technical support to New Jersey's practicing planners, as well as those interested in becoming professional planners. As the only state in the nation that requires a license to practice planning, NJAPA also serves NJ Professional Planners (NJPP).

All professionals serving the NJAPA are volunteers. Our Professional Development Officer and Professional Development Subcommittee serve NJPPs by providing technical assistance with license application requirements and procedural assistance, web-based information dissemination, responding to numerous Board related phone calls and email inquiries, and by providing professional planning exam prep courses. The NJPP Board offers no assistance to candidates wishing to take the PP exam. All review courses and review materials have traditionally been provided by NJAPA, without any assistance from the NJPP Board.

Our interaction with Board staff, and experience through the assistance provided to prospective NJ licensed planners has afforded us with a deep understanding of the needs of this particular State licensing board. As such, our comments are as follows:

Communication with the Public: Examinees routinely tell us that Board staff are non-responsive to telephone and e-mail inquiries. Consequently, the NJAPA often finds itself directing examinees and answering questions that should be fielded by the Board's staff. This is likely more a reflection of staffing levels, than staff adequacy or efficiency. Accordingly, we recommend that the Board receive more staff.

Up-to-Date Website: The Board's website is poor and often out-of-date. If staffing at the State Board continues to remain as it is, then an up-to-date website will assuredly reduce staff burden by improving communication and reducing the number of phone calls, letters and personal visits to the Board (and NJAPA).

NJAPA and State Board Interaction: NJAPA officers are able to gain access to Board staff; however, we believe a more open line of communication is extremely important. If NJAPA is going to continue to disseminate information, thus supporting the Board, communication must be open. We recommend that one of the State Board's seats be designated for a NJAPA Executive Committee Member, even if it is an ex-officio member that does not vote.

NJPP Exam Content: NJAPA fully supports an up-to-date exam. However, much feedback from the past examinees has indicated that questions pertaining to new rules and regulations may at times be premature. While we are not certain of the exact nature of the issue, we believe the latest concerns were related to the NJ Highlands regulations and permitting process. The examination does not have to be an absolute mystery. ALL major examinations (AICP, SAT, LSAT, etc) allow for topical review and basic expectations that an examinee is expected to know. In New Jersey, one of the most regulated states in the nation, this becomes important considering ever changing nature of land use legislation and regulations.

NJPP Licensure Requirements: NJAPA feels that planning is a specialty. As such, the title of PP deserves all the same considerations as other professional specialties, such as engineers or architects. Whether one is trained as a planner or other design professional, planners view development from a different perspective than other professions. Currently, those educated and trained as planners must pass both the state's NJPP exam, as well as the national American Institute of Certified Planners (AICP) exam in order to qualify for NJ licensure. The NJPP exam evaluates one's knowledge of NJ planning law, while the AICP evaluates general knowledge of planning history, law, ethics and practice. Both NJ planning law and general planning knowledge are essential to evaluate an applicant's suitability for licensure.

Despite the importance of a broad understanding of planning, engineers, architects, landscape architects and land surveyors need only pass the NJPP exam to qualify for licensure. Allowing these other professions an easier passage to the NJPP title is an insult to educated and experienced planners. Planners are not afforded a reciprocal opportunity to attain licensure in these other professions, nor do we think they should. The NJAPA strongly urges the Attorney General and legislature to re-evaluate this reciprocity policy. At an absolute minimum, the AICP portion of the State's examination process should be required of all examinees. The importance of the subject matter on the AICP examination is paramount to good planning, especially with the complexity of design considerations that need to be addressed in New Jersey. We do not feel this requirement places undue burden on these professionals, but rather enhances their ability to perform better planning and site design.

NJPP Continuing Education: APA recently instituted a mandatory continuing education program, known as Certification Maintenance (CM). This program is meant to keep AICP certified planners informed about planning issues, laws and trends. To better serve our clients and constituents, we feel it is important that NJPPs stay abreast of current planning practice and law. Accordingly, the NJAPA recommends that the State Board require a similar continuing educational requirement for *all* NJPPs. Based on our experiences with CM, the NJAPA would be happy to assist in forming such a program for NJPPs.

Licensure Enforcement: The State should maintain the integrity of its rules and regulations by ensuring the proper use of a "planner" title. Particularly at the state and local government levels, non-licensed NJPPs routinely hold "planner" titles. While some of these practitioners are working "under" a licensed NJPP, many are not. It is essential that trained and licensed individuals serve New Jersey's communities, which the Board should have a better authority to enforce.

NJPP Ethics: Maintaining a high level of ethical conduct by avoiding conflicts of interest and appearance of impropriety are essential to maintaining planning as a respected profession. Accordingly, the NJAPA believes the State Board should adopt the AICP Code of Ethics as a standard for all NJPPs.

At our recent annual conference, the NJAPA polled its membership regarding our interaction with the Board of Professional Planners. Their responses support our concerns regarding Board staff, as well as the policy recommendations outlined above. We are supportive of the licensure of NJ professional planners, as demonstrated by the routine assistance provided to NJPP applicants. We often perform what is really the State's administrative function, which is a challenge to a volunteer organization. In a show of mutual support for the NJAPA, we hope the Attorney General's office and the Board implement our recommendations.

Thank you for your consideration of our concerns and recommendations. We welcome the opportunity to meet with you and the State Board to discuss these issues, and others that pertain to the practice of professional planning in the State of New Jersey.

Sincerely,
Courtenay D. Mercer, PP/AICP
President, NJAPA

cc: Larry DeMarzo, Acting Director, Division of Consumer Affairs
State Board of Professional Planners
Arthur Russo, Executive Director, State Board of Professional Planners

What the Heck are APA Divisions, Anyway?

By Dale R. Powers, AICP
Chair, Small Town and Rural Planning Division
American Planning Association

According to the odds of probability, approximately 4,000 APA members are in the process of renewing their membership. As you review your dues renewal form, you will see "Division Dues" and may wonder exactly what role Divisions have within the organization and what benefit there is in joining a Division. Unlike Chapters – of which membership is a mandatory requirement of maintaining your APA membership – being a member of a Division is optional.

So why should you join a Division? Is it worth the additional \$25.00 a year to your profession (and, perhaps more importantly, your employer) to join a Division?

The best way to describe the differences between a Chapter and a Division is that while Chapters are generalist in nature in serving the needs of members within a geographically-defined area, Divisions focus on the specializations of our profession, such as transportation planning, economic development, and urban design; creating a forum to discuss areas of interest unique to population-based groups of planners such as women, African-Americans, Latinos/Latinas, gays and lesbians, and Native Americans; and establishing a forum for the setting-based planners working in large cities and counties, as well as small towns and rural areas. While the focus of any one Division may be specialized, the scope is nationwide and global (especially true with the International Division). Division members share experiences with members throughout North America and the world, and the ideas learned are trans-

ferable to the situations each of us face on a daily basis.

As you scan the list of the 21 Divisions, you might be wondering what types of issues they are dealing with. Here is a small sample of these issues:

The **City Planning and Management Division** just completed its 3rd peer consultation. Following up on its success for Atlanta and New Orleans, the Division sent a team of 3 experienced Directors to Jackson, MS to consult with local leaders, staff and clientele, reviewed the City's operations and procedures and made recommendations on improvement.

The **Economic Development Division** is presenting a 1/2-day "Economic Development Planning 101" training seminar at next year's APA Conference in Las Vegas, designed for planners interested in this facet of planning or who want a refresher on the topic.

The **Federal Planning Division** just completed its annual workshop, with 236 attendees, 29 exhibitors, and 28 breakout sessions.

The **Gays and Lesbians in Planning Division** has addressed such issues as mapping safe neighborhoods, clear and concise planning documents, neighborhood revitalization, retirement housing, and social equity.

The **Indigenous Planning Division** is currently partnering with the Alaska

APA Chapter to hold a joint conference on Indigenous Planning in Anchorage in the fall of 2008.

The **Planning and Women Division** is in an exceptional position to influence the relationship of planning to women and to highlight outstanding women planners.

The **Small Town and Rural Planning Division** is the first APA Chapter or Division to offer subsidies for AICP Division members to partially reimburse for the cost of maintaining the AICP certification.

The **Transportation Division** is working on a number of initiatives, including the Airports Committee and tracking pending. As well, the Division is developing a mentoring program and revitalizing its Policy Advisory Council that will provide expertise on a range of transportation-related topics.

The **Urban Design and Preservation Division** hosts a nationwide Design Forum Series to engage planners and allied professionals in design oriented planning.

To conclude, before you complete your membership renewal, take another look at that bottom left corner of the application form directly right of this article and consider joining one or more Divisions. It is a simple task to hand-write the Divisions you want to join on the renewal form – and well worth the time and modest cost to do so.



American Planning Association
New Jersey Chapter

Making Great Communities Happen

NJ APA Executive Committee

President

Courtenay Mercer, AICP/P.P.
46 Marlborough Avenue
Middlesex, NJ 08846
Term: 11/07-11/10
Phone: (908) 705-6806
E-mail: pres@njapa.org

Past President

Carlos Rodrigues, AICP/P.P.
Regional Planning Association
179 Nassau Street, 2nd floor
Princeton, NJ 08542
Term: 11/07-10/09
Phone: (609) 228-7080
Email: crodrigues@rpa.org

First Vice-President

Deborah Lawlor AICP/P.P.
New Jersey Meadowlands Commission
1 DeKorte Park Plaza
Lyndhurst, NJ 07071
Term: 11/07 - 11/09
Phone: (201) 460-4671
Fax (201) 372-0161
E-Mail: slopehl@optonline.net

Second Vice-President

Jeffrey Perlman, AICP
Heyer, Gruel, & Associates
63 Church Street
New Brunswick, NJ 08901
Term: 11/06-10/08
Phone: (732) 828-2200
Email: jeffperlman@gmail.com

Treasurer

Jonathan Reiser
New Jersey Office of Smart Growth
P.O. Box 800
Trenton, NJ 08625-0800
Term: 11/07-10/09
Phone: (609) 943-9938
Fax (609) 292-3292
Email: jreiser@newrisedesigns.com

Secretary

Amy Sarrinikolaou, AICP/P.P.
CMX
200 State Highway 9
Manalapan, NJ 07726-0900
Term: 11/07 - 10/09
Phone: (732) 577-9000
asarrini@hotmail.com

Professional Development Officer

Charles Latini Jr., AICP/P.P.
Heyer, Gruel & Associates
63 Church Street
New Brunswick, NJ 08901
Term: Appointed Annually
Phone: (732) 828-2200
Email: charleslatini@yahoo.com

Housing Committee Chair

Vito A Gallo, P.P.
17 Sheridan Road
Summit, NJ 07901
Term: Appointed Annually
Phone: (908) 418-3732
E-Mail: vitoagallo@comcast.net

Legislative Committee Chair

Michael Powell
New Jersey Community Development Corporation
Term: Appointed Annually
E-Mail: m.powell@njcdc.com

Redevelopment Committee Chair

Robert Cotter AICP/P.P.
Jersey City Division of City Planning
30 Montgomery Street, Suite 1400
Jersey City, NJ 07302
Term: Appointed Annually
Phone: (201) 547-5010
Fax (201) 547-4323
E-Mail: bobbyc@jcnj.org

Sustainable Design Committee Chair

Jennifer Senick
Rutgers Center for Green Building
Term: Appointed Annually
Phone: 732.932.4101 x520
E-Mail: jsenick@rci.rutgers.edu

Northeast Area Representative

Linda Wills, AICP/P.P.
878 Traphagen Road
Wayne, NJ 07470-7996
Term: 11/06 - 10/08
Phone: (201) 460-3879
E-Mail: lewills@optonline.net

Northwest Area Representative

Eric Snyder, AICP/P.P.
Sussex County Planning Director
Sussex County Administrative Center
1 Spring Street, Newton 07860
Term: 11/06 - 10/08
Work: (973) 579-0500
Phone: (973) 267-3244
Fax: (973) 267-9816
E-Mail: esnyder@sussex.nj.us

Central Area Representative

Maura McManimon Fennessy, AICP/PP
50 Elm Street
Lambertville, NJ 08530-1600
Term: 11/06 - 10/08
Phone: (609) 278-8803
Fax: (609) 278-1754
E-Mail: maura_mcmanimon@hotmail.com

Southern Area Representative

Tara B. Paxton AICP/P.P.
Township of Brick
401 Chambers Bridge Road
Brick, NJ 08723
Term: 11/06 - 10/08
Phone: (732) 262-4783
Fax: (732) 262-8954
E-Mail: tpaxton@twp.brick.nj.us

Bulletin Editor

Rebecca Hersh, AICP/P.P.
Regional Planning Association
179 Nassau Street, 2nd floor
Princeton, NJ 08542
Term: Appointed Annually
Phone: (609) 228-7080
E-Mail: rebeccamhersh@aol.com

1st Year Student Representative

Katie White
Rutgers University
27 Seaman Street
New Brunswick, NJ 08901
Phone: (952) 200-6416
Whit0931@umn.edu

2nd Year Student Representative

Carrie McCarthy
Rutgers University
63 South Adelaide Ave
Highland Park, NJ 08904
comm@eden.rutgers.edu
703-725-2901

Chapter Administrator

Michael E. Levine, AICP
NJAPA, C/O URS Corporation
One Riverfront Plaza
14th floor, PO BOX 790
Newark, NJ 07102-9715
Phone: (973) 286-4708
Fax: (973) 504-7097
E-mail: mlevine@njapa.org

Webmaster

Brian Carson
E-Mail: webmaster@njapa.org

EVENTS & ANNOUNCEMENTS

R/ECON Winter 2008 Conference: Short-term Outlook for the Re- gional Economy January 17, 2008 1-3pm

New Brunswick, NJ

R/ECON Director Nancy Mantell, James Diffley, director of Global Insights' U.S. Regional Services Group, and Rae Rosen, senior economist for the Federal Reserve Bank of New York will offer their perspectives on the economic prospects for New Jersey, New York and Pennsylvania. Bloustein School Dean James W. Hughes and University Professor Joseph Seneca will offer remarks and lead a discussion. Visit <http://policy.rutgers.edu/news/events.php> for more information.

Call for Nominations: 2008 Smart Growth Awards Due: January 25, 2008

www.njfuture.org

NJ Future's annual planning awards honors smart planning and development in New Jersey. Guidelines and nomination forms for the 2008 Smart Growth Awards can be found at www.njfuture.org. The submission deadline is January 25, 2008. The 2008 Smart Growth Awards Celebration will be held in June 2008 at the Newark Club in Newark. The awards celebration commonly draws an attendance of more than 300 development industry professionals, as well as local, regional, and state leaders.

Mount Laurel II at 25: The Unfin- ished Agenda of Fair Share Housing February 8, 2008 8am—3pm

Princeton University

Experts and key participants in implementing Mount Laurel II will convene to examine briefly the origins of the decision, comment on the current state of the doctrine and its influence on the region and nation, and focus on its unfinished agenda. This event has received approval for four CM credits. To register and for more information, please visit: www.princeton.edu/prior/events/conferences/february_8_2008.xml.

Redevelopment Forum 2008 Friday, February 29, 2008 New Brunswick, NJ

www.njfuture.org

New Jersey Future's Redevelopment Forum is a full day of workshops targeted at local leaders, citizen activists, and professionals interested in strengthening their communities through good planning and high-quality redevelopment. Participants learn from experienced local leaders and professionals the keys to success in achieving innovative, high-quality, community-focused redevelopment projects.

TransAction 2008

April 2-4, 2008

Atlantic City, NJ

The 32nd Annual NJ State Transportation Conference & Expo will be held at the Taj Mahal Hotel & Casino in Atlantic City and will feature federal, state, local and private experts on funding sources, planning, operations, services, consulting, and technology. For more information, visit the conference website: <http://www.njcost.com/transaction.htm>.

Regional Plan Association's 18th annual Regional Assembly April 18, 2008

New York, NY

More information can be found at www.rpa.org or call (212) 253-2727.

APA National Annual Conference 2008 April 27-May 1, 2008 Las Vegas, NV

www.planning.org

Come to the 100th annual planning conference in Las Vegas, Nevada from Sunday April 27 to Thursday May 1, 2008. Enjoy 200-plus conference sessions, mobile workshops, training seminars, and networking opportunities in a city that is tackling a wide range of planning issues and problems as it continues to grow. Early registration deadline is February 28, 2008. For more information, and to register for the conference, visit www.planning.org.

Online Continuing Education for Planners

Bloustein Online Continuing Education Program (BOCEP) provides professional development to those who work in urban planning, community and economic development, public or social policy, or related fields. We offer Internet-based courses in community and economic development, leadership and management, planning law and legal issues, smart growth and sustainable development, and urban design and placemaking.

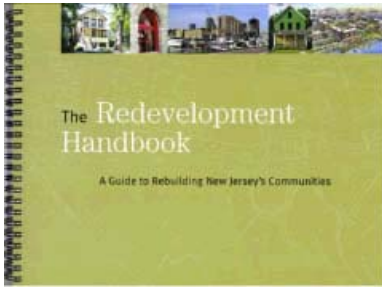
Each course is five weeks long and entirely online. The courses have no scheduled class meetings and students can participate at any time. Students learn through readings and dialogues facilitated by instructors.

Each course costs \$270, but discounts are available for Bloustein School alumni and members of the Planners Network and the NY and NJ APA chapters.

Students can receive 14 Continuing Professional Development Program credits from the AICP for every course, and some BOCEP courses are eligible for one undergraduate credit each. Courses are held in October, January, March, and May.

For more information, visit:
www.policy.rutgers.edu/bocep
or contact BOCEP Director
Leonardo Vazquez, AICP/PP
vasquezl@rci.rutgers.edu

Redevelopment Handbook: A Guide to Rebuilding NJ's Communities



by Stan Slachetka and David G. Roberts © 2003. This *Handbook* has been jointly published by the NJ Department of Community Affairs and the NJ Chapter of the American Planning Association. This book "is an easy-to-understand, practical guide that will help municipalities that are considering redevelopment."

NJAPA Member Price:

\$30.00 per copy
+\$5.00 shipping & handling
\$35.00 total per copy

Non-Member Price:

\$40.00 per copy
+\$5.00 shipping & handling
\$45.00 total per copy

Order Form: Redevelopment Handbook

Name: _____

Mailing Address: _____

City: _____ State: _____ ZIP Code: _____

Email Address: _____

of Copies: _____ X \$35.00= _____
(member price)

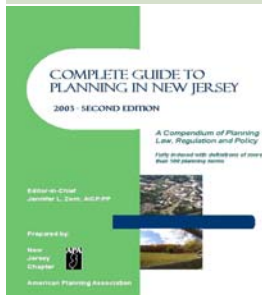
of Copies: _____ X \$45.00= _____
(non-member price)

Total Enclosed: \$ _____

Make checks payable to "NJ APA."

Send checks to: NJAPA, P. O. Box 200402, One Riverfront Plaza, Newark, NJ 07102-9715

Complete Guide to Planning in New Jersey – Second Edition



NJAPA Member Price:

\$30.00 per copy
+\$5.00 shipping & handling
\$35.00 total per copy

Non-Member Price:

\$40.00 per copy
+\$5.00 shipping & handling
\$45.00 total per copy

Order Form: Complete Guide to Planning in New Jersey — Second Edition

Name: _____

Mailing Address: _____

City: _____ State: _____ ZIP Code: _____

Email Address: _____

of Copies: _____ X \$35.00= _____
(member price)

of Copies: _____ X \$45.00= _____
(non-member price)

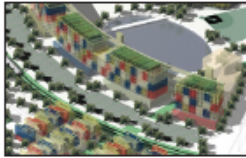
Total Enclosed: \$ _____

Make checks payable to "NJ APA."

Send checks to: NJAPA, P. O. Box 200402, One Riverfront Plaza, Newark, NJ 07102-9715

CONSULTANT DIRECTORY

FX FOWLE



Planning & Urban Design Studio
Commercial / Residential Studio
Interiors Studio
Cultural/ Educational Studio
Transportation Studio

MARK STRAUSS, FAIA, AICP, PRINCIPAL
FXFOWLE ARCHITECTS, PC
22 WEST 19 ST | NEW YORK, NY 10011
T 212.627.1700 | WWW.FXFOWLE.COM

ENTCHEVDOTCOM

gis | gps
database integration

5 Elm Row, Suite 207
New Brunswick, NJ 08901
p: (732) 246-1192
f: (732) 246-1193
www.entchev.com

URBITRAN

PLANNERS • ENGINEERS • ARCHITECTS

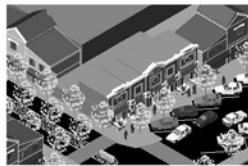
SUSTAINABLE SMART PLANNING

- MASTER PLANNING
- BROWNFIELD REDEVELOPMENT
- SITE PLANNING & DESIGN
- TRANSIT ORIENTED DEVELOPMENT
- ENVIRONMENTAL SERVICES
- SMART GROWTH AND SUSTAINABLE DESIGN
- BICYCLE-PEDESTRIAN PLANNING
- TRAFFIC ENGINEERING & TRANSPORTATION PLANNING
- DOWNTOWN & REDEVELOPMENT PLANNING
- CORRIDOR AND INFILL REDEVELOPMENT PLANNING

570 BROAD STREET, SUITE 501 • NEWARK, NJ 07102
973.643.0807 • www.urbitran.com
NEW YORK • NEW JERSEY • CONNECTICUT • PENNSYLVANIA

H2M

CELEBRATING 75 YEARS



- Master Plans & Zoning
- Redevelopment
- Housing
- Parks & Recreation
- Community Design & Visioning
- Strategic Plans
- GIS

555 Preakness Avenue, Totowa, New Jersey 07512
Tel (973) 942-0700 Fax (973) 942-1333 Email h2m@h2m.com

CVDA

- Community Planning
- Vision Plans and Urban Design
- Economic Development
- Community Park, Recreation, and Open Space Plans
- Neotraditional Village Planning

Carter van Dyke Associates

40 Garden Alley • Doylestown, Pennsylvania 18901-4325
215-345-5053
www.CVDA.com



REMINGTON & VERNICK ENGINEERS AND AFFILIATES

Helping Communities Build A Better Future for More Than A Century

Corporate Headquarters

Haddonfield, New Jersey

856-795-9595

Visit Our Web Site
at www.rve.com

Eng-Wong, Taub & Associates

Traffic Engineers & Transportation Planners

- Traffic Engineering
- Transportation Planning
- Master Planning
- Pedestrian, Bicycle & Parking
- Traffic Simulation & Analysis
- Transit Studies & Traffic Safety

One Gateway Center, 26th Fl.
Newark, NJ 07102
(973) 693-4488

MBE Certified
www.eng-wongtaub.com

THE METRO COMPANY, LLC

Planning • Housing • Finance • Development • Consulting

347 Varick St., Suite 117A
Jersey City, NJ 07302
(201) 435-6500

Fax: (201) 435-6560

E-mail: portney@metroco.com

STUART PORTNEY
President

CONSULTANT DIRECTORY

karabashian eddington planning group

27 gordon's alley
atlantic city nj 08401
phone 609.347.0311
fax 609.347.1819
keplanninggroup.com

a limited liability company

municipal planning •
urban design •
master plans •
redevelopment •
landscape architecture •



Hoyer, Gruel + Associates

63 Church Street
Second Floor
New Brunswick, NJ 08901

tel 732 828 2200
fax 732 828 9480
email MAIL@HGAPA.COM

(community planning consultants)



CORPORATE HEADQUARTERS:
Eleven Tindall Road, Middletown, NJ 07748
732.671.6400 f: 732.671.7365

REGIONAL OFFICES IN:
Moorestown, Toms River & Clark, NJ

www.tandmassociates.com

Master Planning/Land Use Regulations
Environmental Services, Site &
Landscape Design



Environmental, Planning, and Engineering Consultants

THE VALUE OF STRATEGIC THINKING

Contact: Gary Bickle
100 Centre Boulevard, Suite 106J
North Marlton Crossing, Marlton, NJ 08053
tel 856 797-9930 | fax 856 797-9932

New Jersey • New York City • Hudson Valley Region • Long Island • Baltimore/Washington Area

Satisfaction by Design



Engineering
Surveying
Planning
Landscape Architecture

KELLER & KIRKPATRICK
900 Lanidex Plaza, Parsippany, NJ 07054
Tel: (973)377-8500 Fax: (973)887-0925



PROFESSIONAL PLANNING & ENGINEERING, LLC

Engineering • Landscape Architecture • Surveying • Planning

210 Malapardis Road Suite 104 • Cedar Knolls, NJ 07927
Tel: 973-267-3244 • Fax: 973-267-9816 • www.ppecorp.com

creative land use design

**LAND DIMENSIONS
ENGINEERING**



www.landdimensions.com

6 East High Street
Glassboro, NJ 08028

856/307-7800
856/307-7805 fax

GIBBONS
ATTORNEYS AT LAW

**PLANNING,
ZONING, LAND USE,
& REDEVELOPMENT**

Peter J. Carton, Esq. • Douglas J. Janacek, Esq. • Howard D. Geneslaw, Esq., PP, AICP

**GIBBONS, DEL DEO, DOLAN,
GRIFFINGER & VECCHIONE, P.C.**

Phone: 973-596-4500 • Fax: 973-596-0545
e-mail: firm@gibbonslaw.com • website: www.gibbonslaw.com

CONSULTANT DIRECTORY

Planners

Landscape Architects

Urban Designers

Architects

Transportation Planners

Engineers

WWW.URSCORP.COM

URS

URS Corporation
One Gateway Center
Suite 1000
Newark, NJ 07102
Tel: 973.504.7090
Fax: 973.504.7097



Richard Grubb & Associates, Inc.
Cultural Resource Consultants

- Phase I, II and III Archaeological Investigations
 - Archaeological Monitoring
- Historic Architectural Surveys, Assessments and Evaluations
 - Historic American Building Survey (HABS)
 - Historic American Engineering Record (HAER)
 - Cultural Resource Management Plans
 - Investment Tax Credit Applications

30 North Main Street • Cranbury • NJ • 08512
609-655-0692 • Fax 609-655-3050 • mail@richardgrubb.com



MASER
CONSULTING P.A.

Consulting, Municipal & Environmental Engineers
Planners • Surveyors • Landscape Architects

Joseph J. Layton, P.P., AICP
John A. Madden, P.P., AICP
Marcia R. Shiffman, P.P., AICP, C.L.A.

53 Frontage Road, Suite 120
P.O. Box 4017
Clinton, NJ 08809
www.maserconsulting.com

PLANNING SERVICES

COMMUNITY PLANNING

REDEVELOPMENT PLANNING

AFFORDABLE HOUSING

RECREATION PLANNING

LAND PLANNING AND URBAN DESIGN



LGA ENGINEERING, INC.
CONSULTING ENGINEERS & SURVEYORS

A Full Service Engineering, Planning and Surveying Firm
Specializing in the Following:

Planning Services:

- Redevelopment
- Feasibility Studies
- Municipal Planning
- Parks & Recreation Design & Planning

- Streetscape Design & Planning
- Landscape Architecture
- Concept Planning
- Urban Design

A BIRD-FALL SERVICES GROUP COMPANY

Jennifer C. Beahm, P.P., AICP, Vice President
Jeffrey L. Janota, P.P., AICP, Associate

750 Vassar Avenue, Lakewood, NJ 08701 Tel: 732.961.2162 Fax: 732.961.2163
51 Port Terminal Blvd., Bayonne, NJ 07002 Tel: 201.858.3700 Fax: 201.858.3733
www.birdfall.com

...THE LAST WORD



This building is located on one of the main commercial thoroughfares in a large and dense New Jersey city, only a few blocks from a heavily-used train station. This monolith destroys life on the entire block; in fact, the building's door that opens onto the sidewalk isn't even functional. We can't afford to dishonor our streets, and ourselves, like this, particularly as we seek to revitalize New Jersey's urban areas and encourage pedestrian activity. We planners can do better.

— Rebecca M. Hersh, AICP/PP